

# Easily Installed and Affordable



Wells Fargo Center  
Norfolk, Virginia  
ARCHITECT  
Davis Cater Scott, McLean, Virginia  
GLAZING CONTRACTOR  
Walker & Laberge Co., Inc., Norfolk, Virginia  
PHOTOGRAPHY  
© Progress Photo + Marilyn Ott-Close

Today's construction requires that architects balance desired aesthetics with the practical realities of performance and cost. Kawneer's dual-purpose 2250 IG (Inside Glazed) Curtain Wall System responds to these needs, offering new levels of quality, dependability and performance.

## **ECONOMY**

Economically priced and easy to install, 2250 IG Curtain Wall System combines fabrication flexibility, labor and material savings as well as water condensation management in a single package. Inside glazing requires no scaffolding, saving construction time and reducing installation costs.

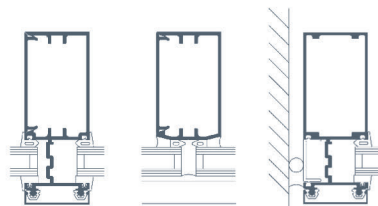
Simplified fabrication provides another advantage because 2250 IG Curtain Wall System is available in either stock lengths or fabricated, adding additional labor savings. For construction flexibility, the system accommodates shear block fabrication for curtain walls and Type A (vertical members run through) or Type B (head and sill members run through) screw spline fabrication for ribbon window applications.

## PERFORMANCE

Keeping the elements at bay is a priority for 2250 IG Curtain Wall System, which features snap-on covers with a 1/2" (12.7 mm) projection, a high-performance rain screen that adds up to increased design options and lower costs. This zone-dammed, pressure-equalized system also offers dry glazing to provide a positive weather seal for high performance and not only helps protect the interior, but also adds life to the ribbon window and curtain wall system. Economical thermal isolation clips are used for improved thermal performance.

## AESTHETICS

Designers appreciate the versatility 2250 IG Curtain Wall System offers. The narrow 2-1/4" (57.2 mm) profile maintains a clean, monumental appearance while meeting all GANA glazing standards. Designers can choose from three system depths: 4-1/2" (114.3 mm), 6" (152.4 mm) and 7-1/2" (190.5 mm). Shear block and screw spline fabrication, and the structural silicone glazed (SSG) option, provide additional design freedom. 2250 IG Curtain Wall System works with glass, granite and metal spandrel infills, and allows two-color design options in Kawneer anodized, standard and custom-painted finishes.



## FOR THE FINISHING TOUCH

Permanodic™ anodized finishes are available in Class I and Class II in seven different color choices.

Painted finishes, including fluoropolymer, that meet or exceed AAMA 2605 are offered in many standard choices and an unlimited number of specially designed colors.

Solvent-free powder coatings add the green element with high performance, durability and scratch resistance that meet the standards of AAMA 2604.



**Granite Plaza**  
Irving, Texas  
ARCHITECT  
**Croft Compton Architects, Dallas, Texas**  
GLAZING CONTRACTOR  
**TEPCO Contract Glazing, Inc., Dallas, Texas**  
PHOTOGRAPHY  
© **Wes Thompson**



**Addison Circle One**  
Dallas, Texas  
ARCHITECT  
**HKS, Dallas, Texas**  
GLAZING CONTRACTOR  
**TEPCO Contract Glazing, Inc., Dallas, Texas**  
PHOTOGRAPHY  
© **Wes Thompson**



© Kawneer Company, Inc. 2013–2019  
Form Number 17-2228.A  
Permanodic™ is a trademark of  
Kawneer Company, Inc.

Kawneer Company, Inc.  
Technology Park / Atlanta

555 Guthridge Court  
Norcross, GA 30092

770.449.5555  
[kawneer.com](http://kawneer.com)



ARCHITECTURAL SYSTEMS | ENTRANCES + FRAMING | CURTAIN WALLS | WINDOWS